

MAP LEGEND

Boundaries	Wind Farms/Points of Interest	Distance - Miles
<ul style="list-style-type: none"> National Boundary County Boundary Fort Drum Military Installation Urban Area (Regional) Airport Area 	<ul style="list-style-type: none"> WSAAF Radar Tower Watertown VORTAC <p>Operating Wind Farm</p> <ul style="list-style-type: none"> Operating Turbine Maple Ridge Wind Farm Wolfe Island Wind Farm <p>Proposed Wind Farm/Project</p> <ul style="list-style-type: none"> Proposed Turbine Cape Vincent Wind Farm Galloo Island Wind Farm Horse Creek Wind Farm St. Lawrence Wind Farm Indian River School District - Alternative Indian River School District - Primary Copenhagen Wind Project Study Area Roaring Brook Wind Farm Town of Hammond Recorded Wind Leases 	<ul style="list-style-type: none"> 10 15 20 25 30 35 40 <p>Distance - Nautical Miles</p> <ul style="list-style-type: none"> 10 15 20 25 30 35 <p>Elevation (Feet)</p> <p>High : 1463</p> <p>Low : 47</p>

Aviation

- Approach Control Airspace
- Aircraft Maneuver Area
- R5201 Airspace
- ILS Obstruction Area
- ILS Obstruction Area - Proposed
- Distance: 9-Miles
- Nominal Traffic Pattern
- Watertown Airways

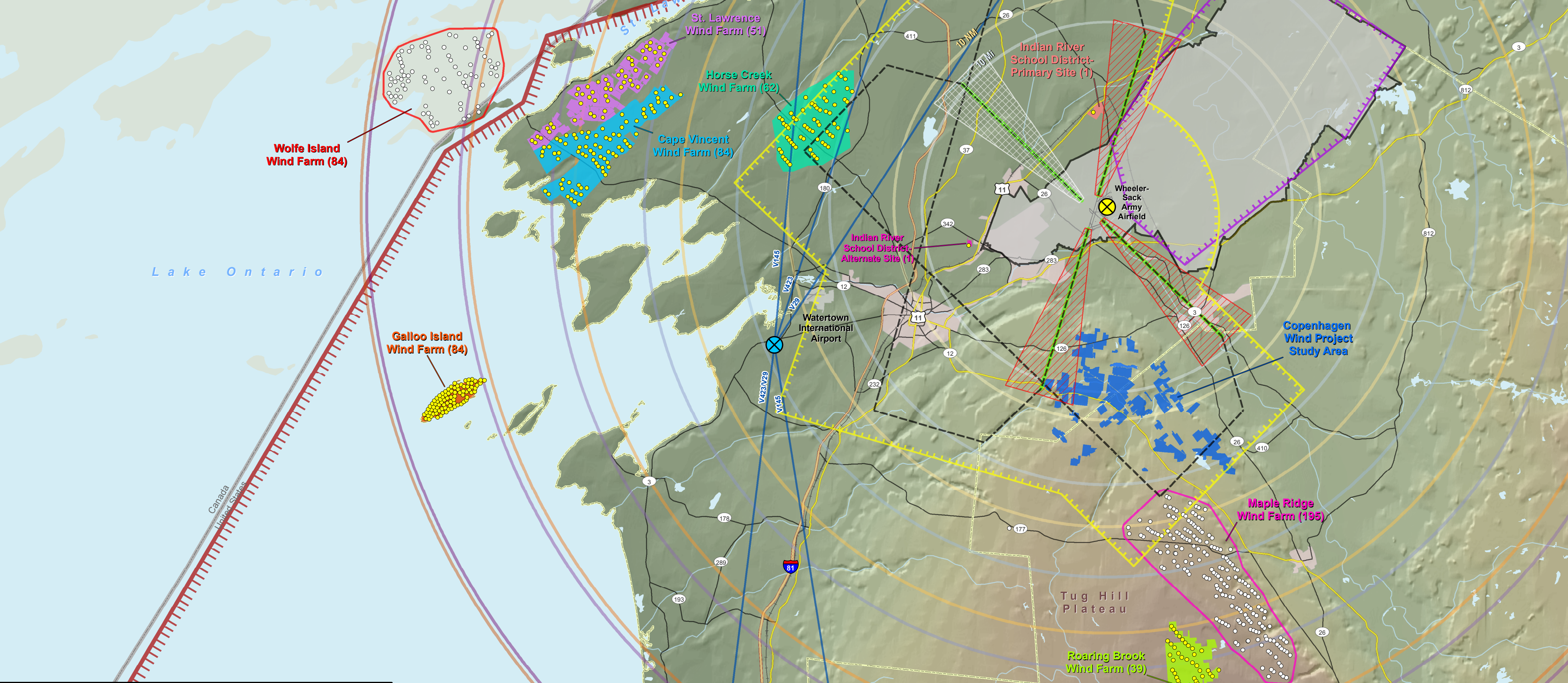
Drainage

- Open Water
- River/Stream

SCALE 1:250,000

0 5 10 Miles

0 5 10 Nautical Miles



OPERATING AND PROPOSED WINDFARMS
Fort Drum Military Installation

Prepared by the GIS Component of Public Works - Environmental Division Fort Drum, New York 23-March-11